

PowerPusher®

Battery-Powered Material Handling Equipment



Nu-Star, Inc.

powerpusher.com/800.800.9274



PowerPusher®
If It Rolls... We Can Move It.™



PowerPusher® industrial electric tug devices are a safe, cost-effective alternative to manual processes using personnel, and large expensive ride-on material handling equipment such as forklifts and tractors. The compact, walk-behind units enable a single person to safely move thousands of pounds with total control and maximum visibility. Each unit is designed to assist in company compliance with OSHA health and safety guidelines that limit the amount of manual pushing and pulling performed by a single person.

Years of experience as a leading innovator, designer, and manufacturer in the industry has given PowerPusher® the competitive edge in providing state-of-the-art, reliable, cost-effective load-moving solutions that deliver tangible productivity and safety benefits in a wide variety of applications. Specializing in custom solutions, you will get to work with a company engineer on every application to help diagnose, design, and implement the best solution for you. A wide range of standard and custom attachments and options are available.

Extra-Duty PowerPusher™

The **Extra-Duty PowerPusher™** improves operator safety and reduces manpower while increasing plant floor productivity.

- All electric, 24-volt DC, 400-watt motor delivers up to 25,000 lb. push/pull capacity on rail and up to 10,500 lb. capacity on casters
- Onboard 100-240 Volt AC charger, with up to 5 miles of travel between charges

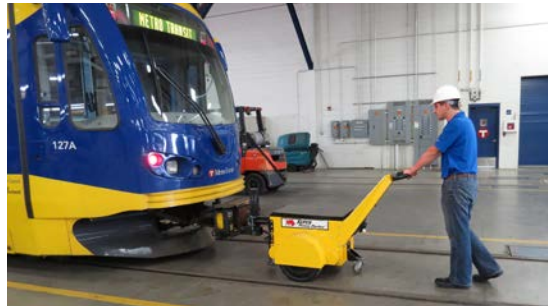


Super PowerPusher™

The **Super PowerPusher™** has the push/pull capacity necessary to overcome extremely heavy or high rolling resistance loads, delivering the ability to mobilize virtually any industrial load.



- All electric, 36-volt DC, 1500-watt motor delivers up to 125,000 lb. push/pull capacity on rail and up to 60,000 lb. capacity on casters
- Dual motor configuration delivers up to 250,000 lb. push/pull capacity on rail and up to 80,000 lb. capacity on casters
- Onboard 100-240 Volt AC charger, with up to 5 miles of travel between charges



E-750 Electric Wheelbarrow™

The **PowerPusher E-750 Electric Wheelbarrow™** safely and easily transports loads weighing up to 1,000 lbs. Available with multiple tubs including a galvanized steel tub, heavy-duty poly tub, and a slurry tub, this motorized electric wheelbarrow improves safety and efficiency by eliminating ergonomic challenges and unnecessary production delays associated with manual wheelbarrows. Designed to minimize strain, the E-750 provides push-button powered dump capability.

- Hauls up to 1,000 lbs. or 12 cubic feet, increasing efficiency
- Runs at up to 4 mph for faster speed than standard wheelbarrows



MFC-100™

The **MFC-100™** is ideal for lifting and moving heavy barrels, trailer towing or lifting awkward equipment. With push-button ease, operators can engage the hydraulic lift to raise the load for effortless transport.

- Up to 6,000 lb. push/pull capacity on casters and 15,000 lbs. on rail
- Integrated hydraulic actuator with up to 5,000 lb. lift capacity
- Includes 100-240 Volt AC charger, with up to 5 miles of travel time between charges



Hazardous-Duty PowerPusher™

The **Hazardous-Duty PowerPusher™** is certified for Class 1, Division 1, Group D areas and is designed to tackle challenging applications in demanding environments.

- 24-volt DC, 400-watt motor for powerful push/pull capacity of up to 25,000 lbs.
- 36-volt DC, 1500-watt motor for push/pull capacity of up to 125,000 lbs.



ET-100 Transporter™

The electric **ET-100 Transporter™** enables a more productive, safer work environment by providing easier warehousing, shipping, and supplies management.

- 1,100 lb. transport capacity
- Variable speed throttle makes it easy to use in tight spaces
- Includes 115-230 Volt AC charger, with up to 5 miles of travel between charges



Side Rail
Cage Option



Tank Rack
Option

ET-105 Powered Lift Table™

The **ET-105 Powered Lift Table™** is designed to improve ergonomics and eliminate lifting injuries with its powered drive and height adjustment. It can operate as a temporary workstation, or it can hold and raise equipment and parts, making a variety of tasks more ergonomic.

- 800 lb. lift capacity, 1,100 lb. drive capacity
- Platform can be raised to any height up to 63" with the push of a button
- Includes 115-230 Volt AC charger, with up to 5 miles of travel between charges



Power Tug™

The **Power Tug™** is designed to promote productivity with minimal manpower in a 24-inch footprint. It has a mono-drive wheel that enables the unit to easily mobilize loads with complete control. Fitted with an electric actuator, it can accommodate various connection heights.

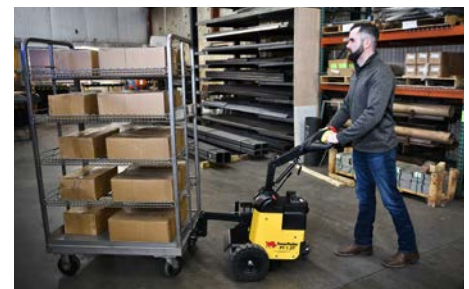
- 24-volt DC, 840-watt motor for up to 6,000 lb. push/pull capacity
- Standard and custom legs and connections available
- Onboard 100-240 Volt AC charger, with up to 5 miles of travel between charges



PT 1.2T™

The **PT 1.2T™** is designed to promote productivity with minimal manpower, allowing a single person to maneuver up to 2,600 lbs. with total control.

- 24-Volt DC, 800W motor delivers up to 2,600 lb. push/pull capacity
- Quick-change battery system
- Customizable connection hooks



Heavy-Duty Trailer Mover™

The **Heavy-Duty Trailer Mover™** is designed to move RVs, industrial carts, boat trailers, utility trailers and more. A single operator can do the work of 10+ people, increasing productivity and reducing the risk of injury.

- Fully electric and battery-powered; 1500-watt motor delivers 35,000+ lb. push/pull capacity on level grade, 16,000+ lb. push/pull on 5% grade and 70,000 lbs. on rail
- Configurable with a ball hitch, NATO style pintle hitch or custom hitch options as well as a hydraulic lift
- Up to 3,000 lb. tongue weight; higher custom tongue weights available
- Onboard 100-240 Volt AC charger, with up to 5 miles of travel between charges



E-750 Trailer Mover™

The **E-750 Trailer Mover™** is designed for moving boat trailers, livestock trailers, cargo trailers, industrial carts and more. A single operator can do the work of 3-4 people, increasing productivity and reducing risk of injury.

- Fully electric and battery-powered; 850-watt motor delivers 7,500+ lb. push/pull capacity on level grade, 5,000+ lb. push/pull on 5% grade and up to 15,000 lbs. on rail
- Configurable with a ball hitch, NATO style pintle hitch and custom hitch options so all types of trailers and carts can be moved
- Up to 1,000 lb. tongue weight
- Onboard 100-240 Volt AC charger, with up to 5 miles of travel between charges



1425 Stagecoach Road, Shakopee, MN 55379
Phone: 952.445.8295

powerpusher.com / 800.800.9274



PowerPusher®
If It Rolls... We Can Move It.™